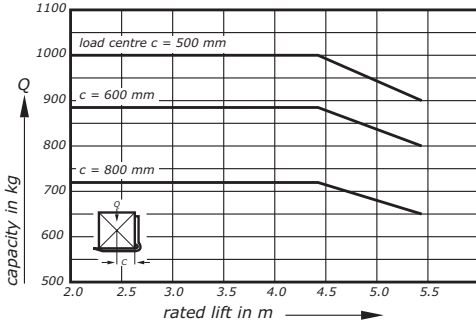
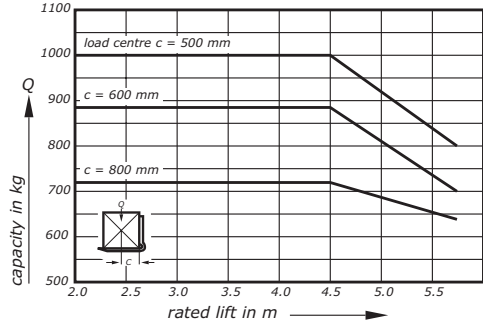


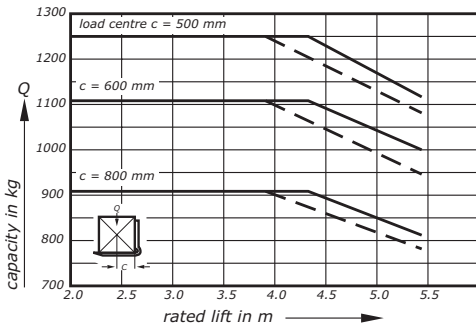
Capacities RX50-10 Tele/Hilo mast



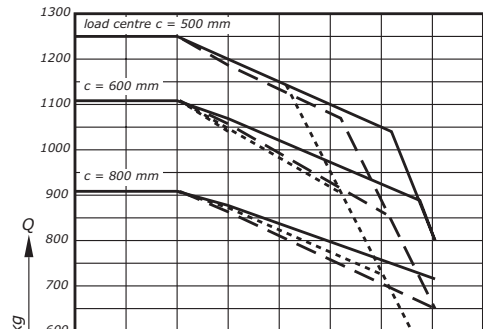
Capacities RX50-10 Triplex mast



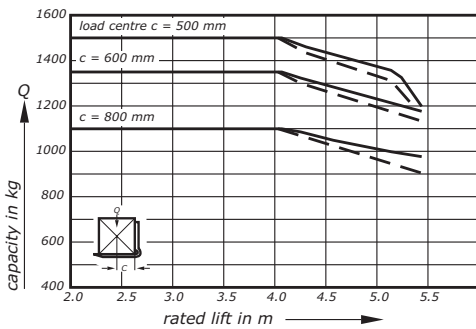
Capacities RX50-13 Tele/Hilo mast



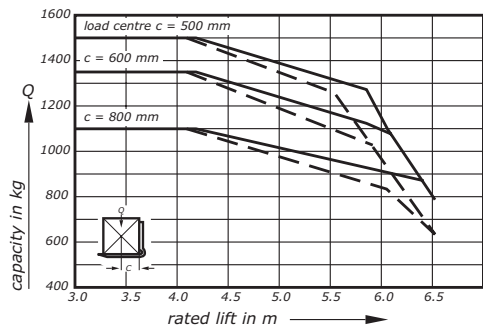
Capacities RX50-13 Triplex mast



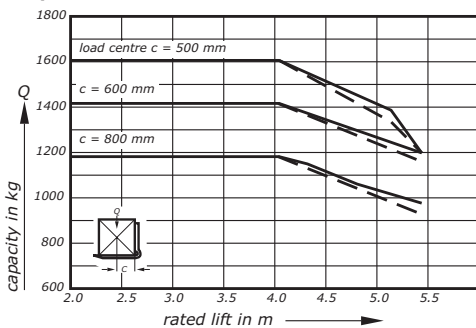
Capacities RX50-15 Tele/Hilo mast



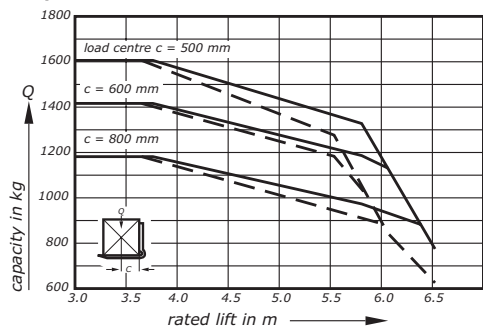
Capacities RX50-15 Triplex mast



Capacities RX50-16 Tele/Hilo mast



Capacities RX50-16 Triplex mast



Technical Data

Electric Forklift Trucks

RX 50-10 / RX 50-13 / RX 50-15 / RX 50-16.

■ Drive.

The 24 volt 3-phase drive motor acts directly on the steered rear wheel of the RX 50 and ensures a high performance capability and driving dynamics.

The 3 phase drive (ASM Technology) provides rapid acceleration and high gradeability.

Because it is totally enclosed and there are no carbon brushes, the drive motor is maintenance-free. This saves maintenance costs.

The drive motor acts directly on the rear steered wheel where there is a long turning radius thus providing optimum drive efficiency. For frequent and tight curves, depending on the work cycle, up to 30 % less energy is consumed than with twin-motor front-wheel drives.

The drive is also suitable for freeing tightly wedged pallets in containers, wagons or lorries.

Thanks to its electrical regenerative braking the motor can feed back up to 15% of the energy into the battery when the accelerator pedal is released, depending on the application, and thus increase the useful work from a battery charge by up to 1.5 hrs. This means that intermediate charging or changing of the battery is often not needed, or even that the use of a small battery might be possible.

Wear free electrical braking also leads to 90 % less wear on the brake linings and reduces the maintenance costs.

Sensitive driving with optimal energy utilisation is guaranteed by the STILL controller. This also makes it possible to hold the truck on a ramp without using the brakes, providing greater safety and driving convenience.

The drive controller is protected within the counterweight on which it is directly mounted. The heat from the controller is dissipated by the large area of the counter weight. This arrangement gives very good cooling without additional fans and makes work agreeably quiet and reliable.

Adjustment of the travel speed depending on the steering angle increases driving safety and protects the load.

■ Electrical system.

The electrical system of the RX 50 is digital in operation with information exchange between the electrical assemblies through a CAN bus system which is already used successfully in the automobile industry. The reduction in the number of cables and plug connectors due to this improves the operational reliability and allows other electrical equipment to be retro-fitted easily using pre-installed terminals.

■ Mast.

The STILL clear view mast is supported high on the frame and connected to the front axle at the bottom. Due to the wide spacing of these points the mast retains high rigidity with no twisting of the mast section. Depending on the application, the telescopic, hilo or triplex designs are available.

- Telescopic: suitable for many applications, economical and gives a clear-view through the mast.

- Hilo: supplements the telescopic mast with an additional central full free lift cylinder for high stacking under low ceilings, to utilise the space right up to the roof.

- Triplex: for applications with low doorways but high stacking heights to utilise the space right up to the roof.

The nested * beam mast sections with the integral hoist cylinders and in-line rear mounted lift chains, in conjunction with the slim profile of the fork carriage, give the best clear visibility. The hydraulic hoses are run in the dead visibility area of the mast sections – with no hose reels – for optimum visibility and wear-free operation, even with attachments.

■ Moving front axle.

The length of the wheelbase is altered by around 100 mm by means of a centrally located cylinder acting on the front axle. This



variable wheelbase gives the following advantages when extended:

- More driving comfort due to fewer rocking movements and greater safety when transporting loads.
- Reliable transfer of the driving force to the floor due to up to 56% greater contact pressure on the rear wheel because of the longer lever arm of the front axle. This particularly facilitates driving on ramps.
- Saves unnecessary extra weight on the rear wheel by redistribution of weight and a larger radius of action for lower energy consumption from one battery charge.

Benefits of a shorter wheelbase:

- Greater manoeuvrability for better utilisation of storage space and less shunting.

■ Hydraulic system.

Thanks to the STILL controller, the speed of the pump motor is regulated exactly, according to the demand, by the position of the valve lever or the steering wheel. This allows longer use from one battery charge.

Sensitive operation of the hydraulics increases the working safety due to highly accurate lifting. The pump draws the oil from the tank through a filter, so that all hydraulic units are supplied with clean oil. This reduces the wear to a minimum.

The hydraulics themselves also improve the energy consumption by:

- The high efficiency of the hydraulic pump even at low speeds (e.g. when steering). Bronze coated wear discs with very low friction properties seal the gears against the housing and guarantee a loss-free oil flow within the pump.
- The replacement of the pressure relief type anti-cavitation valve by a load retaining valve so that the pump does not have to overcome a pre-set valve pre-load with a specific hydraulic pressure. e.g. when tilting without a load.
- The priority valve is directly connected to the pump so that hydraulic interfaces and hoses are not needed. Leakage is avoided and a safer, cleaner operation guaranteed. The same applies to a pressure relief valve for

attachments which are located directly on the valve block.

■ Drivers compartment.

- The low entry height, large foot well and inclined floor plate with anti-slip lining, ensure fast convenient entry and exit, plus a relaxed leg position when driving.

- The smoothly adjustable steering column with its small steering wheel offers ergonomic adjustment for the driver, and reduced steering movements.

- The pedal arrangement, like that in a car, can be replaced with a dual pedal arrangement if required, in order to adapt the RX 50 to the personal driving habits of the driver for a maximum turnaround of goods.

- The Forward - Neutral - Reverse switch on the valve lever (lift and lower) allows a quick and comfortable change of driving direction without changing the grip, making for fatigue operation even over long shifts.

- The heated display with clock, service and battery indicator and error messages, ensures a constant display of the condition of the vehicle even when changing from cold to warm areas of use.

- With 5 selectable driving programmes the driver can change the driving characteristics of the RX 50 at any time to match the application or his own driving preferences. Each programme can be adapted precisely to the appli-



cation profile, in order to achieve an optimum level of economy and turnaround of goods.

- The overhead guard on the RX 50 gives generous headroom even for tall drivers. Innovative design of the guard optimises the all-round vision by presenting the slimmest profiles to the drivers line of vision.

■ Safety.

The RX 50 complies with all applicable EC safety requirements and regulations.

It thus carries the "CE" symbol.

■ Quality.

All forklift trucks from STILL comply with the ISO 9001 quality standard. They are carefully constructed and manufactured. The materials used are checked to stringent standards.

■ Service.

The maintenance interval of the RX 50 is 1000 hours or 12 months. These intervals save on maintenance costs especially in single shift operation where the 1000 hours corresponds roughly to the annual number of operating hours.

Quick diagnosis is achieved via a laptop computer. All components requiring maintenance are readily accessible and quick availability of all necessary spares, ensures maximum uptime.

RX 50 Electric Forklift Trucks.

In accordance with VDI guidelines 2198, this specification applies to the standard model only.
Alternative tyres, mast types, ancillary equipment, etc. could result in different values.

Characteristics	Still GmbH		Still GmbH			Still GmbH				
	RX 50-10	RX 50-13	RX 50-16							
1.1	Manufacturer		Still GmbH			Still GmbH				
1.2	Manufacturer's model designation		RX 50-10			RX 50-13				
1.3	Power supply – electric, diesel, petrol, gas, mains electric		electric			electric				
1.4	Type of control – hand, pedestrian, stand-on, rider seated		rider seated			rider seated				
1.5	Carrying capacity/load	Q (kg)	1000			1250				
1.6	Load centre	c (mm)	500			500				
1.8	Load distance	x (mm)	298			325				
1.9	Wheelbase (Mast Forward/Vertical/Back)	y (mm)	997	1030	1096	1079	1112	1178	1129	1162
Wheels, tyres	2.1	Weight	kg	2228	2210	2538	2520	2502	2748	2730
	2.2	Axle loadings laden front	kg	2847	2805	3279	3265	3251	3697	3685
	2.2.1	Axle loadings laden rear	kg	381	405	509	505	497	551	545
	2.3	Axle loadings unladen front	kg	1072	1060	1102	1090	1074	1132	1120
	2.3.1	Axle loadings unladen rear	kg	1156	1150	1436	1430	1424	1616	1610
Wheels, tyres	3.1	Tyres – rubber (V), superelastic (SE), pneumatic (L), polyurethane (PE)	V		SE	V	SE	L	V	SE
	3.2	Tyre size – front	16x6x10 ^{1/2}	16x6-8	16x6x10 ^{1/2}	18x7-8	18x7-8/16 PR	16x7x10 ^{1/2}	18x7-8	18x7-8/16 PR
	3.3	Tyre size – rear	16x6x10 ^{1/2}	16x6-8	16x6x10 ^{1/2}	18x7-8	18x7-8/16 PR	16x7x10 ^{1/2}	18x7-8	18x7-8/16 PR
	3.5	Wheels – number front (x = drive wheel)	2			2			2	
	3.5.1	Wheels – number rear (x = drive wheel)	1x			1x			1x	
	3.6	Track width – front	b ₁₀ (mm)	848	835	842	870	853	842	842
	3.7	Track width – rear	b ₁₁ (mm)	0	0	0	0	0	0	0
Dimensions	4.1	Tilt angle, mast/fork carriage forwards	degrees	3			3			3
	4.1.1	Tilt angle, mast/fork carriage backwards	degrees	6			6			6
	4.2	Closed height	h ₁ (mm)	2260			2260			2260
	4.3	Free lift	h ₂ (mm)	150			150			150
	4.4	Lift height	h ₃ (mm)	3430			3430			3430
	4.5	Height, mast raised	h ₄ (mm)	4080			4080			4080
	4.7	Height to top of overhead guard (cabin)	h ₆ (mm)	2065*			2080**			2080
	4.8	Seat height	h ₇ (mm)	920			935			935
	4.12	Coupling height	h ₁₀ (mm)	420			435			435
	4.19	Overall length	l ₁ (mm)	2423			2527			2577
	4.20	Length to front face of forks	l ₂ (mm)	1623			1727			1777
	4.21	Overall width	b ₁ (mm)	1006	998	993	996	1043	1037	996
	4.22	Fork thickness	s (mm)	35			35			35
	4.22.1	Fork width	e (mm)	80			80			80
	4.22.2	Fork length	l (mm)	800			800			800
	4.23	Fork carriage to DIN 15173 – class / form A or B		ISO II B			ISO II B			ISO II B
	4.24	Fork carriage width	b ₃ (mm)	980			980			980
	4.31	Ground clearance beneath mast, laden	m ₁ (mm)	90			90			90
	4.32	Ground clearance at centre of wheelbase	m ₂ (mm)	100			100			100
	4.33	Aisle width for pallets 1000 x 1200 wide	A _{st} (mm)	2955			3058			3108
4.34	Aisle width for pallets 800 x 1200 long	A _{st} (mm)	3075			3180			3230	
4.35	Outer turning radius	W _a (mm)	1325			1403			1453	
4.36	Inner turning radius	b ₁₃ (mm)								
Performance	5.1	Speed laden	km/h	11.5			12			12
	5.1.1	Speed unladen	km/h	12			12.5			12.5
	5.2	Lift speed laden	m/s	0.32			0.31			0.3
	5.2.1	Lift speed unladen	m/s	0.52			0.52			0.52
	5.3	Lowering speed laden	m/s	0.54			0.54			0.54
	5.3.1	Lowering speed unladen	m/s	0.6			0.6			0.6
	5.5	Rated drawbar pull laden	N	1650			1400			1280
	5.5.1	Rated drawbar pull unladen	N	1950			1700			1670
	5.6	Max. drawbar pull laden	N	2840			3500			3770
	5.6.1	Max. drawbar pull unladen	N	8200			7500			7500
	5.7	Gradeability laden	%	6.5			5			4
	5.7.1	Gradeability unladen	%	11			8.5			8
	5.8	Max. gradeability laden	%	19			19			16
	5.8.1	Max. gradeability unladen	%	25			25			25
5.9	Acceleration time laden	s	5.3			5.4			5.5	
5.9.1	Acceleration time unladen	s	4.7			4.8			4.9	
5.10	Brakes		hydraulic			hydraulic			hydraulic	
Motors	6.1	Drive motor hourly capacity	kW	4.5			4.5			4.5
	6.2	Hoist motor capacity at 15% duty factor	kW	7.8			7.8			7.8
	6.3	Battery equipment to DIN 43531/35/36 A, B, C, no		DIN 43535 A			DIN 43535 A			DIN 43535 A
	6.4	Battery voltage	U (V)	24			24			24
	6.4.1	Battery capacity	K 5 (Ah)	575 (500-625)			805 (600-875)			920 (700-1000)
	6.5	Battery weight	kg	445			600			676
	6.6	Energy consumption according to VDI cycle	kWh/h							
Other	8.1	Drive control		Stilltronic-Impulse			Stilltronic-Impulse			Stilltronic-Impulse
	8.2	Operating pressure for attachments	bar	190			190			190
	8.3	Oil flow for attachments	l/min							
	8.4	Average noise peak at operator's ears	dB (A)							
	8.5	Trailer coupling, type/DIN		pin			pin			pin

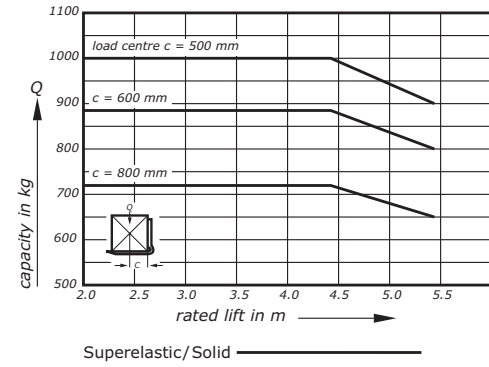
* Overhead guard height above 1965 mm available ** Overhead guard height above 1980 mm available

Technical Data

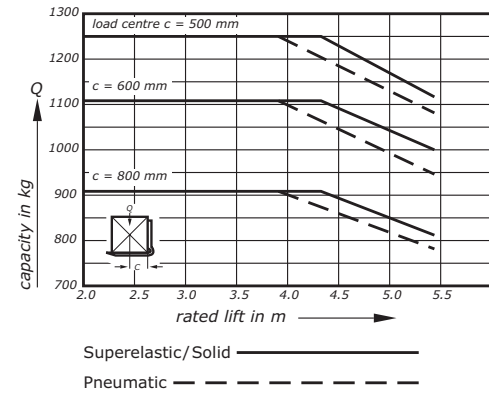
Electric Forklift Trucks

RX 50-10 / RX 50-13 / RX 50-15 / RX 50-16.

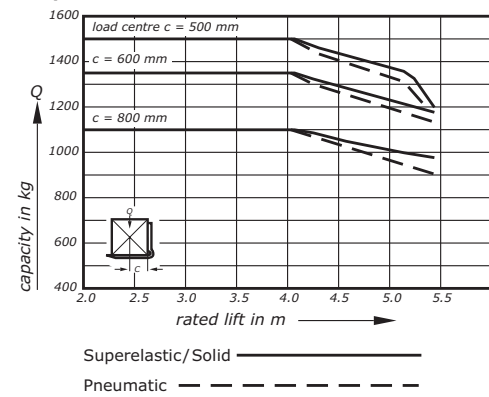
Capacities RX 50-10 Tele/Hilo mast



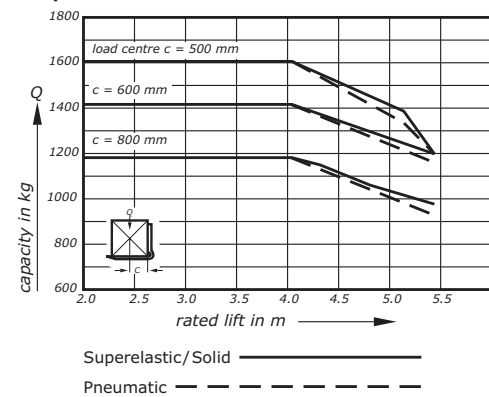
Capacities RX 50-13 Tele/Hilo mast



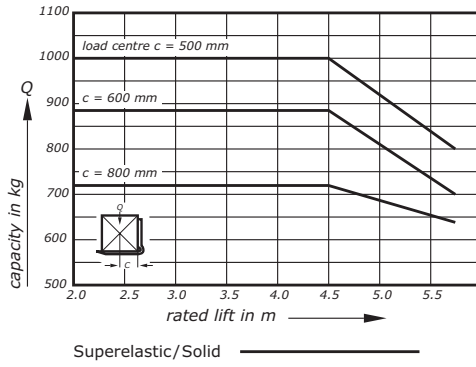
Capacities RX 50-15 Tele/Hilo mast



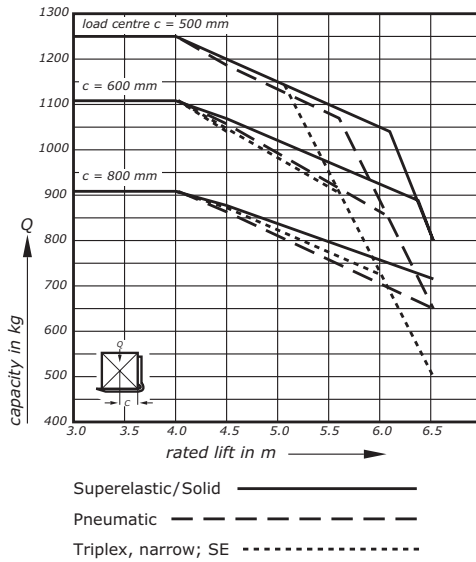
Capacities RX 50-16 Tele/Hilo mast



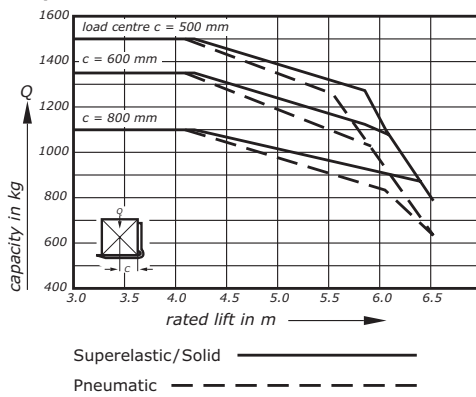
Capacities RX 50-10 Triplex mast



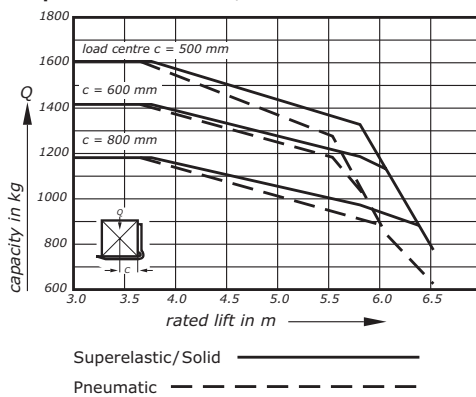
Capacities RX 50-13 Triplex mast



Capacities RX 50-15 Triplex mast



Capacities RX 50-16 Triplex mast



Drive.

The 24 volt 3-phase drive motor acts directly on the steered rear wheel of the RX 50 and ensures a high performance capability and driving dynamics.

The 3 phase drive (ASM Technology) provides rapid acceleration and high gradeability.

Because it is totally enclosed and there are no carbon brushes, the drive motor is maintenance-free. This saves maintenance costs.

The drive motor acts directly on the rear steered wheel where there is a long turning radius thus providing optimum drive efficiency. For frequent and tight curves, depending on the work cycle, up to 30 % less energy is consumed than with twin-motor front-wheel drives.

The drive is also suitable for freeing tightly wedged pallets in containers, wagons or lorries.

Thanks to its electrical regenerative braking the motor can feed back up to 15% of the energy into the battery when the accelerator pedal is released, depending on the application, and thus increase the useful work from a battery charge by up to 1.5 hrs. This means that intermediate charging or changing of the battery is often not needed, or even that the use of a small battery might be possible.

Wear free electrical braking also leads to 90% less wear on the brake linings and reduces the maintenance costs.

Sensitive driving with optimal energy utilisation is guaranteed by the STILL controller. This also makes it possible to hold the truck on a ramp without using the brakes, providing greater safety and driving convenience.

The drive controller is protected within the counterweight on which it is directly mounted. The heat from of the controller is dissipated by the large area of the counter weight. This arrangement gives very good cooling without additional fans and makes work agreeably quiet and reliable.

Adjustment of the travel speed depending on the steering angle increases driving safety and protects the load.

Electrical system.

The electrical system of the RX 50 is digital in operation with information exchange between the electrical assemblies through a CAN bus system which is already used successfully in the automobile industry. The reduction in the number of cables and plug connectors due to this improves the operational reliability and allows other electrical equipment to be retrofitted easily using pre-installed terminals.

Mast.

The STILL clear view mast is supported high on the frame and connected to the front axle at the bottom. Due to the wide spacing of these points the mast retains high rigidity with no twisting of the mast section. Depending on the application, the telescopic, hilo or triplex designs are available.

• Telescopic: suitable for many applications, economical and gives a clear-view through the mast.

• Hilo: supplements the telescopic mast with an additional central full free lift cylinder for high stacking under low ceilings, to utilise the space right up to the roof.

• Triplex: for applications with low doorways but high stacking heights to utilise the space right up to the roof.

The nested * beam mast sections with the integral hoist cylinders and in-line rear mounted lift chains, in conjunction with the slim profile of the fork carriage, give the best clear visibility. The hydraulic hoses are run in the dead visibility area of the mast sections – with no hose reels – for optimum visibility and wear-free operation, even with attachments.

Moving front axle.

The length of the wheelbase is altered by around 100 mm by means of a centrally located cylinder acting on the front axle. This



variable wheelbase gives the following advantages when extended:

• More driving comfort due to fewer rocking movements and greater safety when transporting loads.

• Reliable transfer of the driving force to the floor due to up to 56% greater contact pressure on the rear wheel because of the longer lever arm of the front axle. This particularly facilitates driving on ramps.

• Saves unnecessary extra weight on the rear wheel by redistribution of weight and a larger radius of action for lower energy consumption from one battery charge.

Benefits of a shorter wheelbase:

• Greater manoeuvrability for better utilisation of storage space and less shunting.

Hydraulic system.

Thanks to the STILL controller, the speed of the pump motor is regulated exactly, according to the demand, by the position of the valve lever or the steering wheel. This allows longer use from one battery charge.

Sensitive operation of the hydraulics increases the working safety due to highly accurate lifting. The pump draws the oil from the tank through a filter, so that all hydraulic units are supplied with clean oil. This reduces the wear to a minimum.

The hydraulics themselves also improve the energy consumption by:

• The high efficiency of the hydraulic pump even at low speeds (e.g. when steering). Bronze coated wear discs with very low friction properties seal the gears against the housing and guarantee a loss-free oil flow within the pump.

• The replacement of the pressure relief type anti-cavitation valve by a load retaining valve so that the pump does not have to overcome a pre-set valve pre-load with a specific hydraulic pressure. e.g. when tilting without a load.

• The priority valve is directly connected to the pump so that hydraulic interfaces and hoses are not needed. Leakage is avoided and a safer, cleaner operation guaranteed. The same applies to a pressure relief valve for

attachments which are located directly on the valve block.

Drivers compartment.

• The low entry height, large foot well and inclined floor plate with anti-slip lining, ensure fast convenient entry and exit, plus a relaxed leg position when driving.

• The smoothly adjustable steering column with its small steering wheel offers ergonomic adjustment for the driver, and reduced steering movements.

• The pedal arrangement, like that in a car, can be replaced with a dual pedal arrangement if required, in order to adapt the RX 50 to the personal driving habits of the driver for a maximum turnaround of goods.

• The Forward - Neutral - Reverse switch on the valve lever (lift and lower) allows a quick and comfortable change of driving direction without changing the grip, making for fatigue operation even over long shifts.

• The heated display with clock, service and battery indicator and error messages, ensures a constant display of the condition of the vehicle even when changing from cold to warm areas of use.

• With 5 selectable driving programmes the driver can change the driving characteristics of the RX 50 at any time to match the application or his own driving preferences. Each programme can be adapted precisely to the appli-



cation profile, in order to achieve an optimum level of economy and turnaround of goods.

• The overhead guard on the RX 50 gives generous headroom even for tall drivers. Innovative design of the guard optimises the all-round vision by presenting the slimmest profiles to the drivers line of vision.

Safety.

The RX 50 complies with all applicable EC safety requirements and regulations. It thus carries the "CE" symbol.

Quality.

All forklift trucks from STILL comply with the ISO 9001 quality standard. They are carefully constructed and manufactured. The materials used are checked to stringent standards.

Service.

The maintenance interval of the RX 50 is 1000 hours or 12 months. These intervals save on maintenance costs especially in single shift operation where the 1000 hours corresponds roughly the to the annual number of operating hours.

Quick diagnosis is achieved via a laptop computer. All components requiring maintenance are readily accessible and quick availability of all necessary spares, ensures maximum uptime.

Electric Forklift Trucks

RX 50-10 / RX 50-13 / RX 50-15 / RX 50-16.

RX 50

Technical Data.

